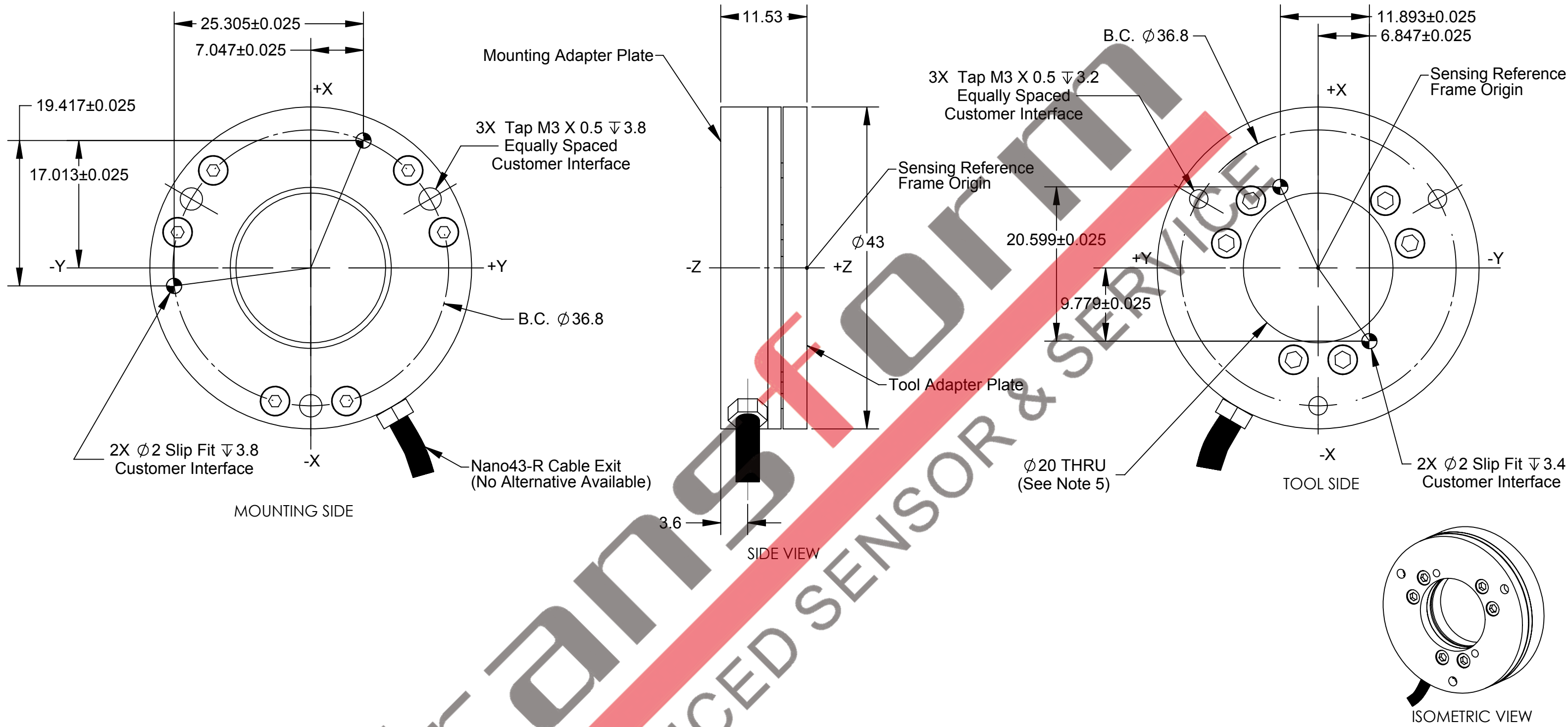


Rev.	Description	Initiator	Date
06	ECO12438: Update transducer construction	ELB	31JUL2014



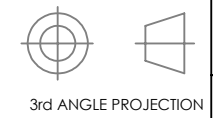
- NOTES:**
1. Mounting and Tool Adapter made of aluminum, Transducer made of hardened stainless steel.
 2. **WARNING: DO NOT LOOSEN OR REMOVE INTERFACE PLATES OR CABLE FITTING DUE TO POTENTIAL DAMAGE.**
 3. **DO NOT EXCEED INTERFACE DEPTH. MAY CAUSE DAMAGE**
 4. Standard connector (not shown) has 17mm diameter & is 67.5mm long.
 5. Do not allow items passing through center hole to touch both the Mounting and Tool Adapter Plates or accuracy will be compromised.

NOTES: UNLESS OTHERWISE SPECIFIED.
DO NOT SCALE DRAWING. ALL DIMENSIONS ARE IN MILLIMETERS.



1031 Goodworth Drive, Apex, NC 27539, USA
Tel: +1.919.772.0115 Email: info@ati-ia.com
Fax: +1.919.772.8259 www.ati-ia.com
ISO 9001 Registered Company

PROPERTY OF ATI INDUSTRIAL AUTOMATION, INC. NOT TO BE REPRODUCED IN ANY MANNER EXCEPT ON ORDER OR WITH PRIOR WRITTEN AUTHORIZATION OF ATI.



DRAWN BY: B.Woodleif 1/12/01		TITLE	
CHECKED BY: LJH 7/15/04		Nano43 Transducer	
PROJECT # -----	SHEET 1 OF 1	SCALE	SIZE
		1:1	B
		DRAWING NUMBER	REVISION
		9230-05-1110	06