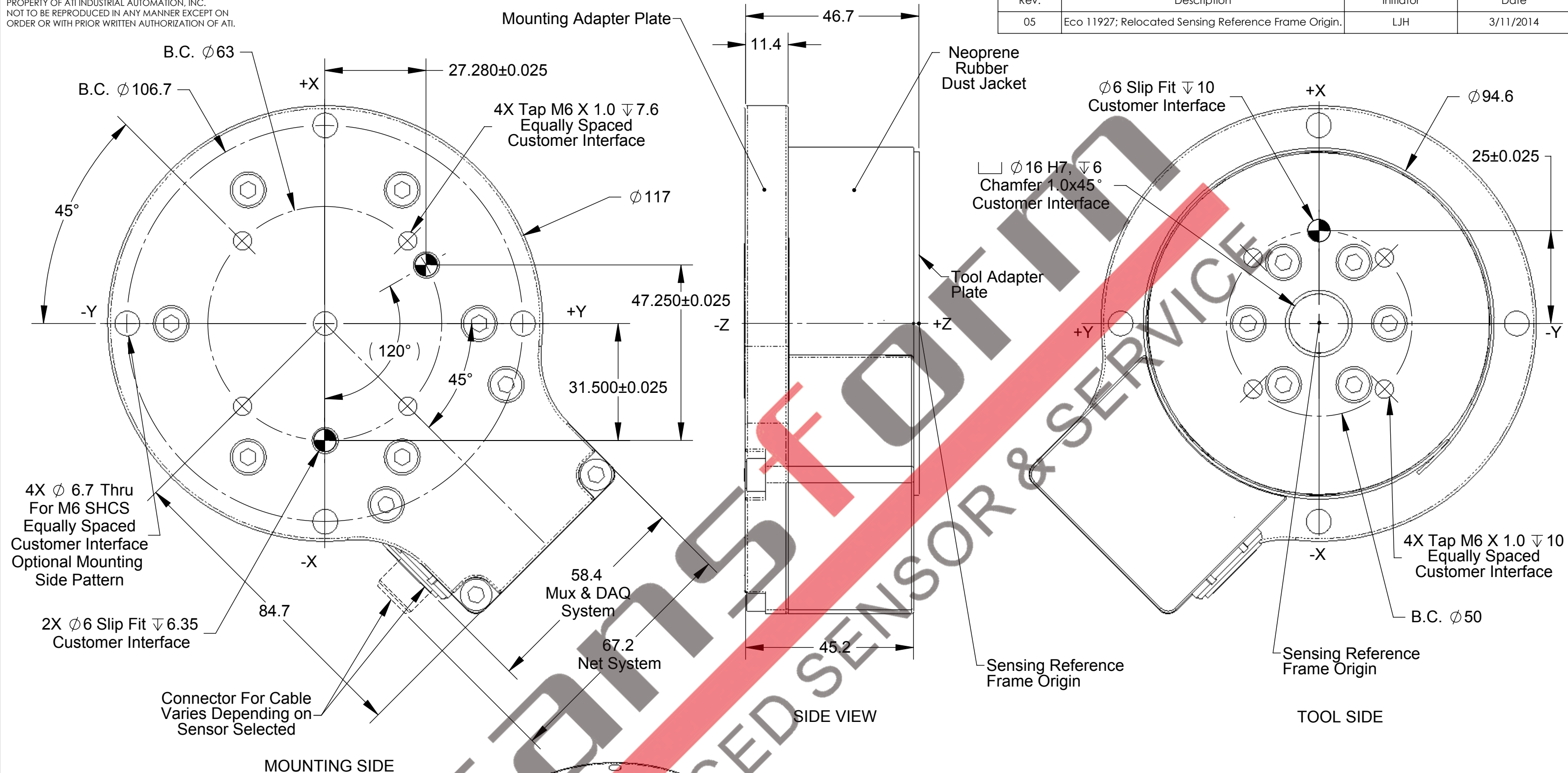


Rev.	Description	Initiator	Date
05	Eco 11927; Relocated Sensing Reference Frame Origin.	LJH	3/11/2014

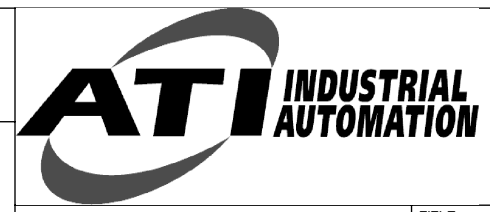


- Notes:**
1. Material: Stainless Steel and Aluminum
  2. Sensing Reference Frame Origin at Surface Center of Tool Adapter.
  3. Do not disassemble transducer. Doing so could damage transducer and will void warranty.
  4. For best accuracy, transducer must be mounted to a surface rigid enough to support loads without deflection.

NOTES: UNLESS OTHERWISE SPECIFIED

DO NOT SCALE DRAWING. DRAWN IN SOLIDWORKS. ALL DIMENSIONS ARE IN MILLIMETERS.

3rd ANGLE PROJECTION



1031 Goodworth Drive, Apex, NC 27539, USA  
 Tel: +1.919.772.0115 Email: info@ati-ia.com  
 Fax: +1.919.772.8259 www.ati-ia.com  
 ISO 9001 Registered Company

DRAWN BY: P.Sparrow, 2/13/06	TITLE: IP60 Delta Transducer		
CHECKED BY: D.Norton, 2/17/06	SCALE: 1:1	SIZE: B	DRAWING NUMBER: 9230-05-1262-05
WEIGHT LBS:	PRODUCT RELEASE #	DATE:	SHEET 1 OF 1
ASSEMBLY REF:			