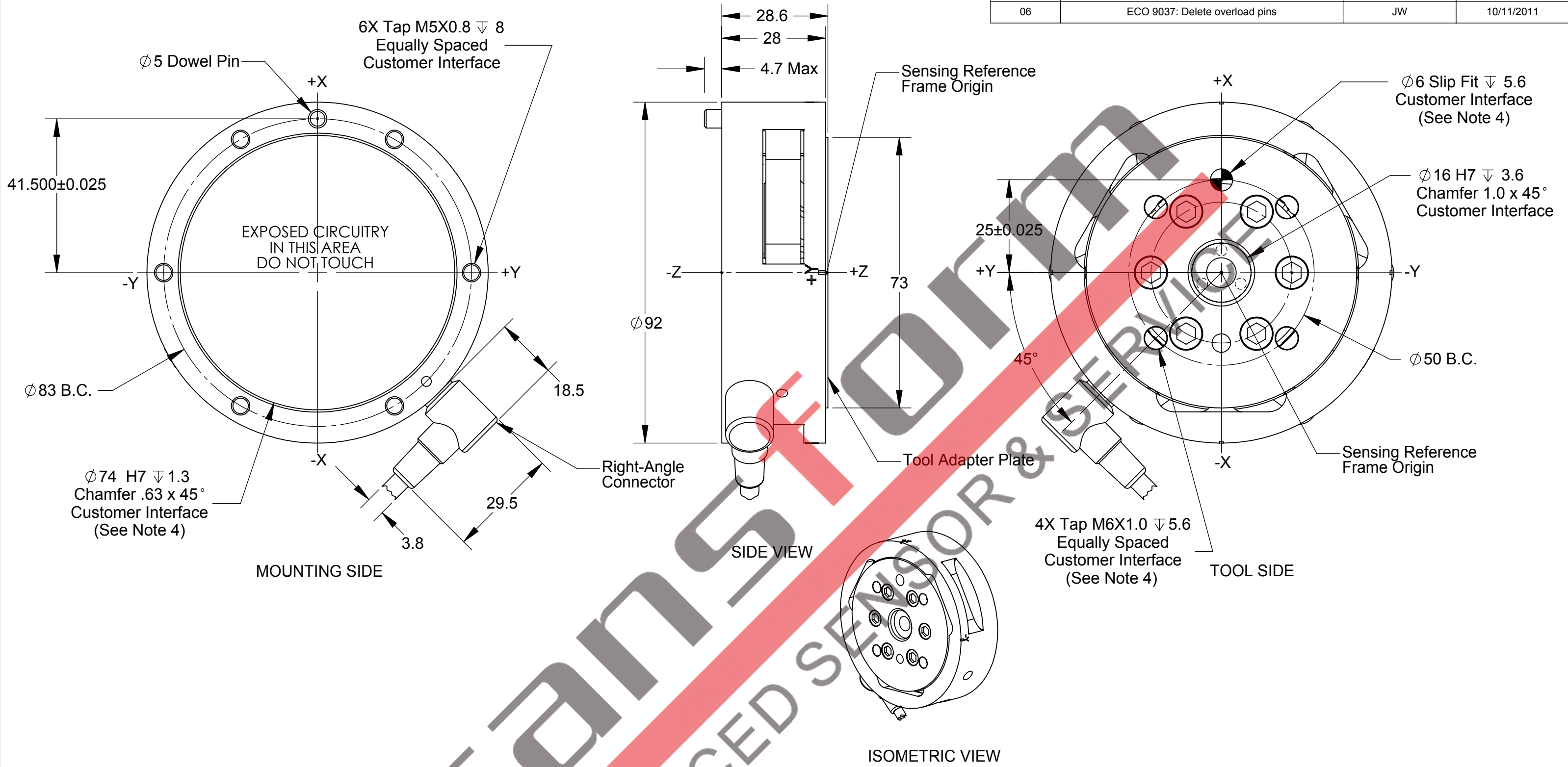


Rev.	Description	Initiator	Date
06	ECO 9037: Delete overload pins	JW	10/11/2011



- Notes:
1. Material: Hardened Stainless Steel.
 2. Do not touch internal electronics or instrumentation. This could damage transducer and will void warranty.
 3. Tool Side RING-PLUG Option Moves Origin. See 9230-05-1059 for Position.
 4. **DO NOT EXCEED INTERFACE DEPTH, MAY CAUSE DAMAGE.**
 5. For best accuracy, transducer must be mounted to a surface rigid enough to support loads without deflection.

NOTES: UNLESS OTHERWISE SPECIFIED.
DO NOT SCALE DRAWING. ALL DIMENSIONS ARE IN MILLIMETERS.



1031 Goodworth Drive, Apex, NC 27539, USA
Tel: +1.919.772.0115 Email: info@ati-ia.com
Fax: +1.919.772.8259 www.ati-ia.com
ISO 9001 Registered Company

PROPERTY OF ATI INDUSTRIAL AUTOMATION, INC. NOT TO BE REPRODUCED IN ANY MANNER EXCEPT ON ORDER OR WITH PRIOR WRITTEN AUTHORIZATION OF ATI.

DRAWN BY: C. Sturgis 01/28/10		TITLE	
CHECKED BY: P. Fusco 01/28/10		Delta Transducer without Mounting Adapter	
PROJECT # -	SHEET 1 OF 1	SCALE	REVISION
		1:1	06
		SIZE	DRAWING NUMBER
		B	9230-05-1102

